



St. Chad's Catholic Primary School

# Newsletter



*'Sharing, Caring and Learning Together  
Through Christ'*

Web: [www.st-chads.lancs.sch.uk](http://www.st-chads.lancs.sch.uk)

Twitter: @StChadsChorley

**Thursday 28<sup>th</sup> November 2024**



## ADVENT MASS

**THIS COMING MONDAY IN SCHOOL  
ALL INVITED TO THIS SPECIAL CELEBRATION**



**Monday 2<sup>nd</sup> December at 9:30am in the school hall.** We will be welcoming Bishop Tom to join Fr Mark in celebrating Holy Mass in the school hall. This will be the Advent Mass for both school and parish, which makes it even more special. We will also take the opportunity to bless our beautiful new altar table, which was very kindly donated to us by the families of our Year 6 leavers' last year. Please enter via back doors to main hall after drop off, or any time before 9:30am if you prefer to wait in the car or elsewhere.

## CHRISTMAS FAIR – THIS EVENING 6:30-8:00PM

### FINAL UPDATES AND REMINDERS:

- Most stalls will be **cash only**, so **please come equipped with 50p's and £1s** wherever possible, especially for the children's games.
- There will be a card reader on the refreshment stall, which can also be used to exchange £1 tokens, should you need them.
- The raffle will be drawn in school tomorrow and winners announced on email/Seesaw.
- Entry is entirely free and everyone in the community are very **welcome** to join us.

**Thank you everyone for your donations and support!**



## MISSION STATEMENT UPDATE

Following the consolation phase of our Mission Statement review, we have drafted a refreshed and renewed statement which we believe articulates our collective mission perfectly. It received final approval by governors last night and we thank you for your contributions to the process. We are excited to publish our new Mission Statement in January 2025. Watch this space for details of how we will be launch it with our community.

## CLASS 1 & 2 ROOFS

We are undertaking some repairs to the roofs over the infant classrooms over the next 2-3 weeks. The contractors will be working closely with us, with daily morning briefings, to ensure that the entire site remains safe. If you experience anything that concerns you during pick-up/drop-off times, please inform the school office ASAP.

## AUTUMN TERM DATES FOR THE DIARY

N.B. Dates may be subject to change. We will update with changes and highlight new dates in yellow. You may also subscribe to our calendar via the school website <https://st-chads-catholic-primary-school.secure-primariesite.net/diary/subscribe/> This should update changes to your device. Click on 'Subscribe to this Calendar' and follow the instruction.



DATE	TIME	EVENT
Monday 2 <sup>nd</sup> December	9:30am	Advent Mass in school (all welcome)
Tuesday 10 <sup>th</sup> December	3:30pm	Infant Nativity
Wednesday 11 <sup>th</sup> December	3:30pm	Infant Nativity
Monday 16 <sup>th</sup> December	-	Infant Trip to the Bolton Octagon Theatre
Tuesday 17 <sup>th</sup> December	6:00pm	Junior Carol Service (church)
Wednesday 18 <sup>th</sup> December	-	Christmas Lunch
Thursday 19 <sup>th</sup> December	-	Christmas Parties (Christmas party clothes)
Friday 20 <sup>th</sup> December	2:15pm	Close for Christmas

## CHRISTMAS LUNCH

We will be having our traditional Christmas lunch on Wednesday 18<sup>th</sup> December. The menu will be:



**Traditional Roast Turkey and chipolata sausage with Roast & Mashed Potatoes, Veg, Stuffing & Gravy followed by a Festive Dessert**

**(The vegetarian option of Quorn Fillet and Vegetarian Sausage MUST be pre-booked)**

This menu will be available to the whole school on this day. If your child does not normally have a school lunch on Wednesday's but wishes to take part in this special lunch, please email Mrs Southworth [bursar@st-chads.lancs.sch.uk](mailto:bursar@st-chads.lancs.sch.uk) to add them onto the list. Children who normally have a school lunch on a Wednesday do not need to reply, they will choose from the menu on the day as usual. Payment for this lunch should be made via the Pupil School Meal payment item on ParentPay for children in KS2 who are not entitled to Free School Meals.

## MESSAGE FROM CHORLEY BUDDIES (SVP) & CHORLEY COUNCIL

We understand that it is an economically difficult time at the moment and with Christmas just around the corner, many families will come under more financial hardship. Unfortunately, some families in Chorley may struggle to provide gifts for their children, and we want to make sure that no children in Chorley are left without a gift this Christmas and this is why we are supporting the initiative "The Christmas Toy Appeal" again this year with SVP Chorley Buddies and St Laurence's Church.

**If you would like to help, please donate NEW and UNWRAPPED toys for children aged 0-17 to help those who won't get a present this Christmas. Donations can be dropped off at St Laurence's Church on Union Street between 9am – 12pm on Sunday 1<sup>st</sup> December during their Toy Collection Service. Please no used toys... unwrapped donations only.**



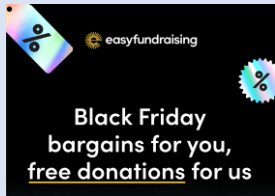
## 200 CLUB WINNERS

Congratulations to our November winners:

PRIZE	NAME	MEMBER NO.	AMOUNT
1 <sup>ST</sup>	Mrs V Cabo	59	£50.00
2 <sup>ND</sup>	Jane Manwaring	55	£30.00
3 <sup>RD</sup>	Miss K McDonald	87	£20.00



## BLACK FRIDAY AND CHRISTMAS SHOPPING ONLINE



Please remember to use Easyfundraising when you do any Black Friday or Christmas shopping online, book your next Holiday or buy home, travel or car insurance.

Over 6,000 shops including Amazon, Argos, Boots, Etsy and many other high street stores, fashion brands and sites will donate to: **St Chad's PTA Fund** at no extra cost to you! You can raise donations when you buy gifts, decorations, food and lots more.

Scan the QR code or visit : <https://www.easyfundraising.org.uk/causes/stchadspta/>

## OUT OF STOCK PE TOPS - OFFER OF HELP

It has been brought to our attention that some of the PE tops are out of stock. These are:

- Boys PE top (32-34)
- Girls PE top (30-32)

Stock is quite low on most of the other boys PE top sizes, but there seems to be a decent supply of the other sizes in the girls PE tops.

We would like to help those affected, while stocks are being replenished. If anyone has a good quality PE top that no longer fits, could they please kindly be sent into school to help others. Therefore, if you are in need of a PE top that is out of stock, please let us know the size and we'll do our best to match you up with a donated one. We hope this will help.

## REMINDERS FROM PREVIOUS WEEKS...

### CHRISTMAS CHARITY WORK

Jesus' birth was an act of divine generosity. We are encouraged to imitate God's love by giving gifts and helping those less fortunate. Catholic Social Teaching also guides us towards living in solidarity with those less fortunate and helping the poor and vulnerable. With this in mind, we plan to support the following causes this Christmas:

- Help the Homeless (donations from the Junior Carol Service)
- Poinsettias for church dedicated to each class – see below (from the baubles project donations)
- CAFOD World Gifts – see below (from the baubles project donations)
- Toy Appeal (see details above)

### POINSETTIAS FOR CHURCH

As is tradition, St Chad's church will be beautifully decorated with poinsettias for Christmas. They are inviting anyone who would like to dedicate a plant in memory of someone to make a donation of £6.50 towards the cost. Like everything, the cost of plants has risen this year. A card of dedication will be placed by each plant, which you are able to take away with you in the New Year. If you would like to get involved, please place your donation and dedication in an envelope and put it in the collection tray at the back of church or put it through the door of the presbytery. Thank you.



### MONEY FOR NOTHING! ASDA REWARDS CASHPOT FOR SCHOOLS

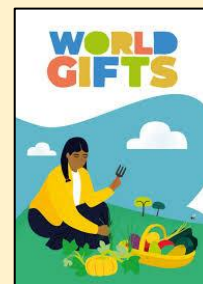
Do you shop at ASDA? If so, please 'opt in' to the **Cashpot for Schools** campaign via your rewards card and select our school. ASDA will then donate a percentage of your shop for us to use on what we need most. This does not affect your own rewards... it really is money for nothing! Our total so far stands at over £70 and we haven't even advertised it until now! Thank you for your support. Every penny really does help us.

**you scan,  
we donate  
££s TO  
SCHOOLS.**

## CAFOD WORLD GIFTS

### SPREADING CHRISTMAS JOY LOCALLY, WHILE HELPING THOSE IN NEED GLOBALLY

You may remember last year that we raised money for CAFOD World Gifts, which directly helps those in need of help at Christmas. On Friday, we will be sending home a cardboard bauble. We are asking children to complete a design on their bauble, sending Christmas wishes to their friends in school, and bring it back into school so that we can hang it on our Christmas tree in the entrance. We invite you to send the bauble into school, rather than Christmas cards, and invite any monies saved in purchasing Christmas cards to be donated to World Gifts from CAFOD (entirely voluntarily). The link below will take you to the page that will show you how much of a difference your money can make this Christmas. <https://worldgifts.cafod.org.uk/collections/frontpage>



Mrs Southworth has created this as an item on Parent Pay if you wish to donate. If your child would still like to send in Christmas cards then please feel free to do so, but we hope that this offers a more environmentally-friendly and worthwhile alternative. Please send the baubles in as soon as they are ready and don't worry if you don't have any string at home as we can attach this when the children bring them in. We had some incredible designs last year and they really brightened up the entrance to the school. We look forward to seeing all of the wonderful designs and thank you in advance for your support. Mrs Topp

## MEDICAL AND HEALTH SCREENING SERVICES IN SCHOOL

Reception & Year 6 National Child Measurement Program	Wednesday 26 <sup>th</sup> February 2025
Year 6 Electronic School health Needs Assessment	Wednesday 26 <sup>th</sup> February 2025



## PRIMARY SCHOOL ADMISSIONS FOR SEPTEMBER 2025

If you, or anyone you know, has a child who is due to start school in September 2025 who might be interested in a place at St. Chad's, please register interest by contacting Mrs Southworth ([bursar@st-chads.lancs.sch.uk](mailto:bursar@st-chads.lancs.sch.uk)) so that we can send details about the admissions process and opportunities to come and look around school. School admissions are now open for children due to start primary or secondary school in September 2025. Apply using the link below:

### SEPTEMBER 2024 ADMISSIONS APPLICATION DEADLINES

#SchoolAdmissions #LCCSchoolAdmissions

Primary Application Closing Date	15th January 2025
----------------------------------	-------------------

Apply for a place at : <https://www.lancashire.gov.uk/children-education-families/schools/apply-for-a-school-place/>

Before you apply, research the schools in your area and check school websites for up-to-date information about open days / evenings. You can also read Ofsted reports at: [www.ofsted.gov.uk](http://www.ofsted.gov.uk).

## PARISH NEWS AND EVENTS

PARISH NEWSLETTER AVAILABLE AT <http://stchads-southhill.org/newsletter>



### LITTLE CHURCH

All our children are invited to come along to Church for Sunday Mass at 9:15am, where they are welcome to join in the Children's Liturgy at "Little Church".

### PARISH CENTRES FOR HIRE

St. Chad's and St. Bede's Parish Centres are available to hire for use by groups and for some private functions. **Enquiries : St Bede's** call Aidan on 01257 271818 / **St Chad's** call 07719 718523. If you get the answerphone, please leave your name and number and they will call you back.

### COFFEE MORNINGS

Regular coffee mornings will be held in St. Chad's Parish Centre every second Sunday of each month. Tea, coffee and cakes will be served for a small donation. Everyone welcome.

### ALTAR SERVERS

Any young people in Year 4 or older who would like to help at Mass as altar servers are very welcome. Please have a word with Fr Mark who will explain how you can get involved.