



St. Chad's Catholic Primary School

Newsletter



*'Sharing, Caring and Learning Together
Through Christ'*

Web: www.st-chads.lancs.sch.uk

Twitter: @StChadsChorley

Thursday 21st November 2024

CHRISTMAS FAIR - THURSDAY 28TH NOVEMBER 6:30-8:00PM

A FEW UPDATES AND REMINDERS:

- Most stalls will be **cash only**, so **please come equipped with 50p's and £1s** wherever possible, especially for the children's games.
- There will be a card reader on the refreshment stall, which can also be used to exchange £1 tokens, should you need them.
- If you are able to send in donations for stalls (see list below), please **drop off in the school entrance tomorrow**. Many thanks.
- Please send any **raffle ticket stubs** into school with payment made on ParentPay.
- We are seeking any businesses or individuals who may be able to offer a **donation for the raffle**. If you are able or know anyone who is, please kindly send into the school office.
- **Stall helpers:** The Christmas Fair doesn't work without the help and support of staff and parents, mostly setting up, running the stalls and tidying up afterwards. Please check the attached list for gaps and email n.lavery@st-chads.lancs.sch.uk if you are able to help.
- Entry is entirely free and everyone in the community are very **welcome** to join us.

Donations:

To populate the various stalls, we kindly ask for some donations, albeit fewer than in previous years. We must stress that donations towards stalls are not compulsory, but are very much appreciated if you can manage it. To help make this manageable for you and to reduce the pressure of sending items in on certain weeks with children, **we ask that donations are just dropped off in the school entrance anonymously in a plastic bag any time up to Friday 22nd November**. The items we are asking for are:



Donation	Notes	Purpose
Sweets	Sweet tubes, tubs, packets of sweets etc	Sweet tombola
Parent 'secret' gift	Any gifts that our children may like to choose for a family member or loved one (e.g. candles, bath sets, gift sets etc.) Please also include a gift bag if possible. If possible, boys donate for dads and girls donate for mums.	Parents' Secret Gift Stall
Bottle	Can be anything from shampoo to champagne!	Bottle Tombola

Thank you everyone for your support!

SPANISH AND JAM CODING CLUBS – COLLECTION POINTS UPDATE

With the change in daylight hours, After School Club won't be using the front playground at the time of clubs being dismissed. We will therefore return to dismissing children for these clubs from the front entrance. We hope this gives you a warmer, drier and brighter place to wait during the winter.

CHRISTMAS CHARITY WORK

Jesus' birth was an act of divine generosity. We are encouraged to imitate God's love by giving gifts and helping those less fortunate. Catholic Social Teaching also guides us towards living in solidarity with those less fortunate and helping the poor and vulnerable. With this in mind, we plan to support the following causes this Christmas:

- Help the Homeless (donations from the Junior Carol Service)
- Poinsettias for church dedicated to each class – see below (from the baubles project donations)
- CAFOD World Gifts – see below (from the baubles project donations)

POINSETTIAS FOR CHURCH

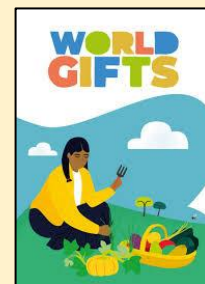
As is tradition, St Chad's church will be beautifully decorated with poinsettias for Christmas. They are inviting anyone who would like to dedicate a plant in memory of someone to make a donation of £6.50 towards the cost. Like everything, the cost of plants has risen this year. A card of dedication will be placed by each plant, which you are able to take away with you in the New Year. If you would like to get involved, please place your donation and dedication in an envelope and put it in the collection tray at the back of church or put it through the door of the presbytery. Thank you.



CAFOD WORLD GIFTS

SPREADING CHRISTMAS JOY LOCALLY, WHILE HELPING THOSE IN NEED GLOBALLY

You may remember last year that we raised money for CAFOD World Gifts, which directly helps those in need of help at Christmas. On Friday, we will be sending home a cardboard bauble. We are asking children to complete a design on their bauble, sending Christmas wishes to their friends in school, and bring it back into school so that we can hang it on our Christmas tree in the entrance. We invite you to send the bauble into school, rather than Christmas cards, and invite any monies saved in purchasing Christmas cards to be donated to World Gifts from CAFOD (entirely voluntarily). The link below will take you to the page that will show you how much of a difference your money can make this Christmas. <https://worldgifts.cafod.org.uk/collections/frontpage>



Mrs Southworth has created this as an item on Parent Pay if you wish to donate. If your child would still like to send in Christmas cards then please feel free to do so, but we hope that this offers a more environmentally-friendly and worthwhile alternative. Please send the baubles in as soon as they are ready and don't worry if you don't have any string at home as we can attach this when the children bring them in. We had some incredible designs last year and they really brightened up the entrance to the school. We look forward to seeing all of the wonderful designs and thank you in advance for your support. Mrs Topp

POSADA – A TRAVELLING NATIVITY

Posada is an old Mexican tradition where young people, dressed as Mary and Joseph, travelled from house to house asking for a room for the night and telling people about the imminent arrival of Jesus in the weeks leading up to Christmas. On Christmas Eve they would visit the local church to re-enact the nativity and place figures of Mary and Joseph in a crib.



At St. Chad's, we would like to invite you as families to share in this tradition. Each day, we will choose a different member of the class to take home our Posada. They will bring home a bag containing the nativity characters, a prayer and a candle. We would like you to use the figures to re-tell the Christmas story and share a prayer together as a family to take a quiet moment in what can be such a busy time of year. Please take photographs of your time with the Posada and send it to your child's teacher on Seesaw. The class teacher may then share this with the class the next day. Please then return the Posada so that the next family can share in this tradition. Let's see if the Posada can make it to every family in school! If we run out of days, we will ensure that those children who missed out start next year.

AUTUMN TERM DATES FOR THE DIARY

N.B. Dates may be subject to change. We will update with changes and highlight new dates in yellow. You may also subscribe to our calendar via the school website <https://st-chads-catholic-primary-school.secure-primariesite.net/diary/subscribe/> This should update changes to your device. Click on 'Subscribe to this Calendar' and follow the instruction.



DATE	TIME	EVENT
Wednesday 27 th November	-	Lancashire Day themed lunch
Thursday 28 th November	6:30 – 8:00pm	Christmas Fair
Monday 2 nd December	9:30am	Advent Mass in school (all welcome)
Tuesday 10 th December	3:30pm	Infant Nativity
Wednesday 11 th December	3:30pm	Infant Nativity
Monday 16 th December	-	Infant Trip to the Bolton Octagon Theatre
Tuesday 17 th December	6:00pm	Junior Carol Service (church)
Wednesday 18 th December	-	Christmas Lunch
Friday 20 th December	2:15pm	Close for Christmas

ADVENT MASS

Please save the date for this special Mass, if you are able to make it – **Monday 2nd December at 9:30am** in school. We will be welcoming Bishop Tom to join Fr Mark in celebrating Holy Mass in the school hall. This will be the Advent Mass for both school and parish. We will also take the opportunity to bless our beautiful new altar table, which was very kindly donated to us by the families of our Year 6 leavers' last year.



LANCASHIRE DAY SPECIAL LUNCH



We will be offering a "Lancashire" themed lunch on Wednesday 27th November. The menu will be:

Traditional Corned Beef Hash with crusty bread or Lancashire Cheese & Potato Pie with Peas or Beans Followed by Toffee Cupcake

CHRISTMAS LUNCH



We will be having our traditional Christmas lunch on Wednesday 18th December. The menu will be:

Traditional Roast Turkey and chipolata sausage with Roast & Mashed Potatoes, Veg, Stuffing & Gravy followed by a Festive Dessert

(The vegetarian option of Quorn Fillet and Vegetarian Sausage MUST be pre-booked by 27th November.)

These menus will be available to the whole school on these days. If your child does not normally have a school lunch on Wednesday's but wishes to take part in either lunch, please email Mrs Southworth bursar@st-chads.lancs.sch.uk to add them onto the list. Children who normally have a school lunch on a Wednesday do not need to reply, they will choose from the menu on the day as usual. Payment for these lunches should be made via the Pupil School Meal payment item on ParentPay for children in KS2 who are not entitled to Free School Meals.

REMINDERS FROM PREVIOUS WEEKS...

MEDICAL AND HEALTH SCREENING SERVICES IN SCHOOL

Reception & Year 6 National Child Measurement Program	Wednesday 26 th February 2025
Year 6 Electronic School health Needs Assessment	Wednesday 26 th February 2025



PRIMARY SCHOOL ADMISSIONS FOR SEPTEMBER 2025

If you, or anyone you know, has a child who is due to start school in September 2025 who might be interested in a place at St. Chad's, please register interest by contacting Mrs Southworth (bursar@st-chads.lancs.sch.uk) so that we can send details about the admissions process and opportunities to come and look around school. School admissions are now open for children due to start primary or secondary school in September 2025. Apply using the link below:

SEPTEMBER 2024 ADMISSIONS APPLICATION DEADLINES

#SchoolAdmissions #LCCSchoolAdmissions

Primary Application Closing Date	15th January 2025
----------------------------------	-------------------

Apply for a place at :
<https://www.lancashire.gov.uk/children-education-families/schools/apply-for-a-school-place/>

Before you apply, research the schools in your area and check school websites for up-to-date information about open days / evenings. You can also read Ofsted reports at: www.ofsted.gov.uk.

SHOPPING ONLINE

Please remember to use Easyfundraising when you do any shopping online, book your next Holiday or buy home, travel or car insurance.



Over 6,000 shops and sites will donate to: St Chad's PTA Fund at no

extra cost to you! You can raise donations when you buy gifts, decorations, food and lots more.

<https://www.easyfundraising.org.uk/causes/stchadspta/>

PARISH NEWS AND EVENTS

PARISH NEWSLETTER AVAILABLE AT <http://stchads-southhill.org/newsletter>



LITTLE CHURCH

All our children are invited to come along to Church for Sunday Mass at 9:15am, where they are welcome to join in the Children's Liturgy at "Little Church".

PARISH CENTRES FOR HIRE

St. Chad's and St. Bede's Parish Centres are available to hire for use by groups and for some private functions. **Enquiries : St Bede's** call Aidan on 01257 271818 / **St Chad's** call 07719 718523. If you get the answerphone, please leave your name and number and they will call you back.

COFFEE MORNINGS

Regular coffee mornings will be held in St. Chad's Parish Centre every second Sunday of each month. Tea, coffee and cakes will be served for a small donation. Everyone welcome.

ALTAR SERVERS

Any young people in Year 4 or older who would like to help at Mass as altar servers are very welcome. Please have a word with Fr Mark who will explain how you can get involved.

MONEY FOR NOTHING! ASDA REWARDS CASHPOT FOR SCHOOLS

Do you shop at ASDA? If so, please 'opt in' to the **Cashpot for Schools** campaign via your rewards card and select our school. ASDA will then donate a percentage of your shop for us to use on what we need most. This does not affect your own rewards... it really is money for nothing! Our total so far stands at over £70 and we haven't even advertised it until now! Thank you for your support. Every penny really does help us.

**you scan,
we donate
££s TO
SCHOOLS.**